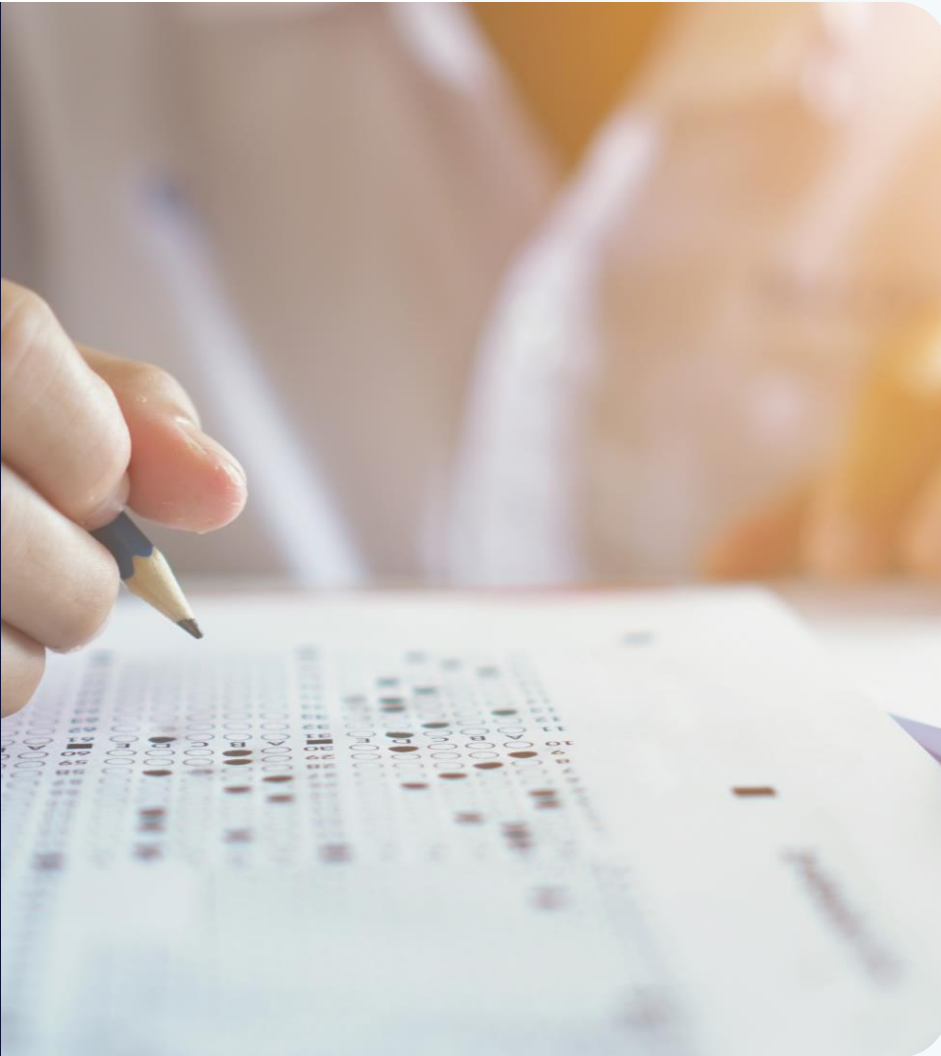


# Survey 4 Impact Overview

**Survey 4 Impact** is a data collection tool developed to collect, report, and visualize data any time, any where, and using any device.



# About Survey 4 Impact



Survey 4 Impact is a data collection tool designed to conduct data collection projects for health, education and development.

Using tablet and mobile devices users can collect and submit data from field (online/offline). Data can be accessed in one place, visualized and/or exported for further analysis. It has its own online survey builder platform and mobile application.



# Survey 4 Impact Goal



Support and strengthening health, education and development sectors by providing real-time data which can support and inform decision making process at any level to achieve desired impact.

# What is Survey 4 Impact?

- ➔ Survey 4 Impact is a mobile data collection tool created to collect (online/offline), report, and visualize data.
- ➔ Survey 4 Impact is designed to support any data collection projects in any field like field research, gap analysis, customer satisfaction, assessments and more.
- ➔ Survey for Impact can support data collection projects in health, education and development sectors.

# Target Audience

With minimal training, any one can be trained to start using Survey 4 Impact, create surveys and collect data.

01. Government

---

02. Donors and Funders

---

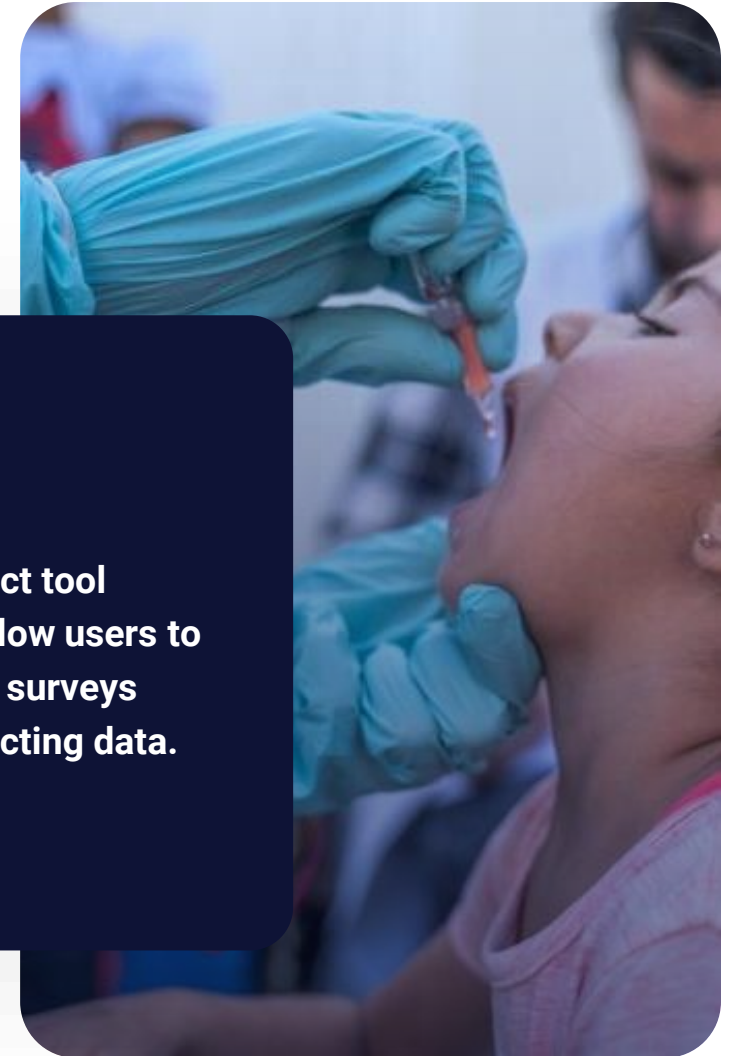
03. Partners who are working to strengthening health, education and development sectors

---

04. Other



**Survey 4 Impact tool designed to allow users to create, launch surveys and start collecting data.**



# Why Survey 4 Impact?

Unlimited surveys, unlimited devices, and unlimited results submissions can be utilized to support data collection projects to get real-time data to support decision making

- ➔ Survey 4 Impact is hosted on private server and can be hosted on client server if required to support **data privacy and ownership**.
- ➔ Survey 4 Impact comes with both **technical and end-user support** during any data collection projects.
- ➔ Survey 4 Impact can be integrated with the **Microsoft Power BI** as a powerful business intelligence tool to generate real-time reports and dashboard.
- ➔ Survey 4 Impact has its own branded **mobile application** available on Google Play store and Apple iOS store.
- ➔ Data can be collected using **web browser, tablet or mobile devices**.
- ➔ It's having full **documentation and training manual** for admin and end-users.

# Previous Projects

Same software including survey builder platform and mobile app is being used by UNICEF through using Data4Action Tool

**01**

Health Facility Assessment for Operational Deployment Planning

**02**

Cold Chain Inventory Assessment

**03**

Monitoring of Installation or Maintenance of Cold Chain Equipment

**04**

Valuation of Introducing New Vaccines and The Monitoring of Supply

**05**

Continuous Monitoring of Facility-based Coverage and Vaccine Stock Levels

**06**

EPI Coverage and EVM Assessment

# Survey 4 Impact Components

## Survey Builder Platform

Using survey builder platform, you can create, test and launch survey. You can assign devices, monitor data collection process, visualize and export data.



## Native Mobile App

Native mobile application for Android and iOS. Download mobile App to link your data collection devices to your survey builder account and assign surveys to devices.



# Features and Benefits



## Easy Data Collection

Survey 4 Impact can be used for interviews, questionnaires and surveys, or observations.



## Instant Compilation

Build surveys, assign to multiple devices, and get immediate submissions and results.



## Drag and Drop Survey Builder

Use any type of survey questions like open text, single & multi select, scale and more.



## Quick Analysis

Survey 4 Impact helps users understand data, quick charts tools are transforming the way people use data to solve challenges.



## Realtime Visualization

Get graphical representation of data using quick charts and real time chart mode.

# How it Works?

Step 1

## Prepare

Consider the devices specifications which are going to be used for the data collection. Check Survey for Impact online manual and documentation for more information.

Step 2

## Install

Install the Survey 4 Impact Application on your iOS or Android device. Survey 4 Impact is available on Google Play Store and Apple iOS Store. Its free App!

Step 3

## Configure

Authenticate your device by entering the password provided by survey manager through survey builder platform. You will need to enter your device password in the admin screen of the device.

Step 4

## Create

Create and customize your survey using the Survey for Impact web platform. Use drag and drop survey builder to add your survey questions and set survey flow.

# How it Works?



## Assign

Step 5

Assign your survey to your device from survey builder platform. Once device is authenticated and assigned to survey, survey can be downloaded to device.



## Download

Step 6

Once devices are assigned to a survey, you can open Survey 4 Impact app and download assigned survey to your device.



## Collect

Step 7

You can use as many devices as needed to collect the data. Collect and upload data from the mobile or tablet devices.



## Visualize

Step 8

Survey 4 Impact includes built-in tools that help to visualize the data using dashboard and quick charts and more.



## Export

Step 9

For further data analysis, you can export data as the CSV, SPSS format using different data analysis and business intelligence tools.

# Questions Types

1	Text	7	Grid - Multi Select	13	Video	19	Ranking
2	Email	8	Grid Scale	14	Date and Time	20	GPS
3	Numeric	9	Scale	15	Signature	21	Scoring
4	Single Select	10	Interval Scale	16	Photo Capture	22	Short Name
5	Multi Select	1	Information	17	Barcode		
6	Grid Single Select	1	Image	18	Dropdown		



# Reporting and Dashboards

## 1 Quick Chart

Use Quick Charts to rapidly graph your results using column charts.

## 2 Dashboard Chart

Dashboard Charts offer additional layout options. Chart types include pie, bar and column charts.

## 3 Real Time Chart

Real Time charts can be set up to display multiple pie, bar or column charts on a single screen. The charts automatically refresh at a user defined interval period.

## 4 Map Results

Map Results displays the GPS location of survey results on a Google Map. The user interface supports mapping large datasets and clustering results.

## 5 Survey Health

Survey Health includes calculators for working out your survey's Confidence Interval (margin of error) for a given Confidence Level and Population size. View survey statistics including percentage of incomplete surveys and the average time a user takes to answer a question or survey.

## 6 Export and Download Data

Export data as the CSV, SPSS format using different data analysis and business intelligence tools.



# What we offer?

We provide on going support to partners from starting server and customizing the survey tools all the way to export and analyze data

- ➔ Server setup and configuration
- ➔ Technical support and management during project life cycle.
- ➔ Admin and end-user's training and support during data collection project.
- ➔ Surveys development and customization.
- ➔ Data analysis, reports and dashboard development

The background is a dark, grayscale image of a desk. On the left, a laptop is open, showing a document with some text and a diagram. In the center and right, there are several sheets of paper with handwritten notes and diagrams. One diagram shows a flowchart with boxes containing text like 'See for front', 'Current budget', 'Analysis', 'Subnet for', and 'Subnet for'. There are also some numbers and other handwritten notes scattered across the papers.

# Thank You

For more information contact

[info@iseet.co](mailto:info@iseet.co)